

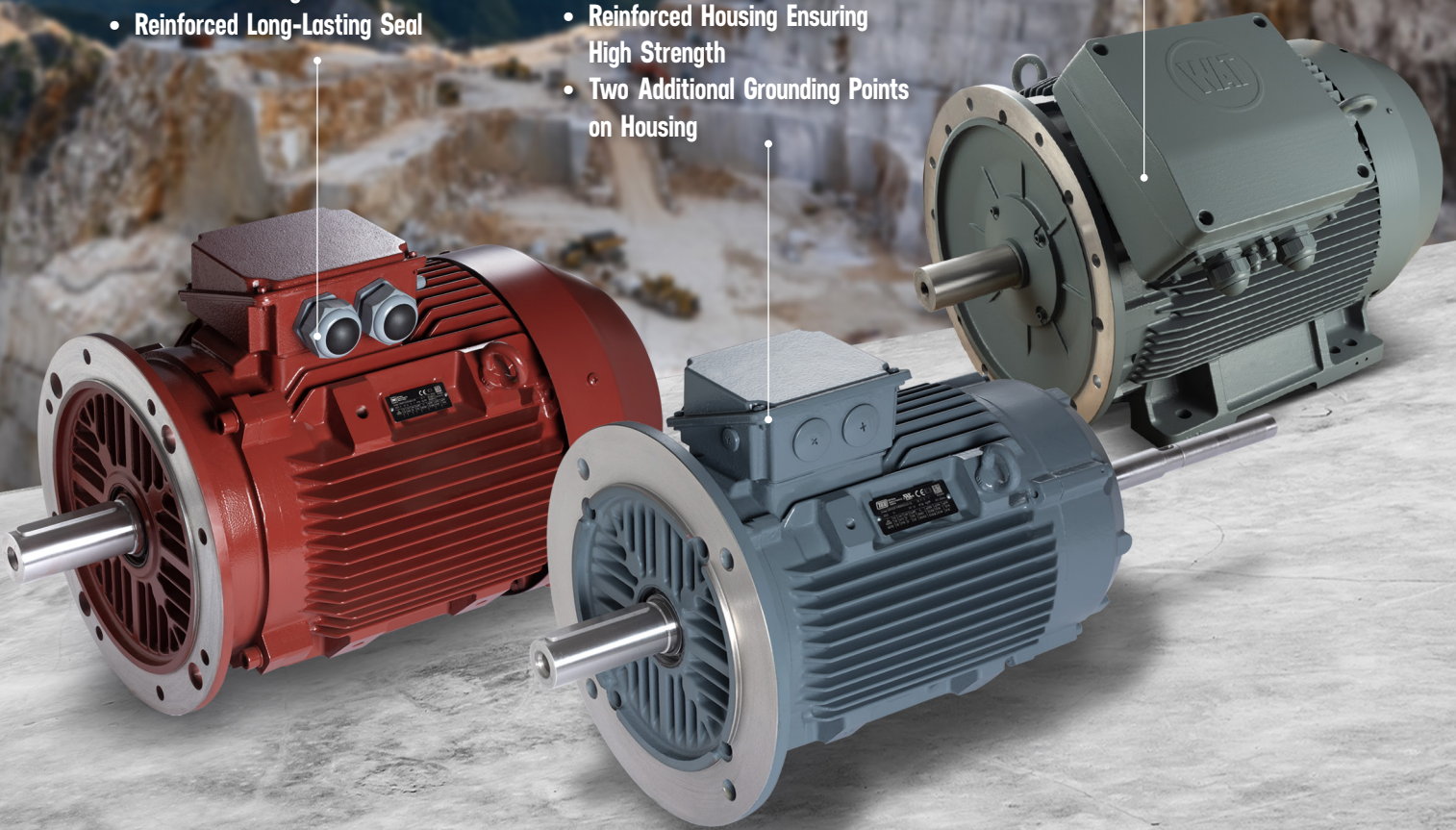
280-315 FRAME CAST IRON MOTORS

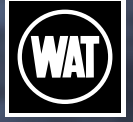
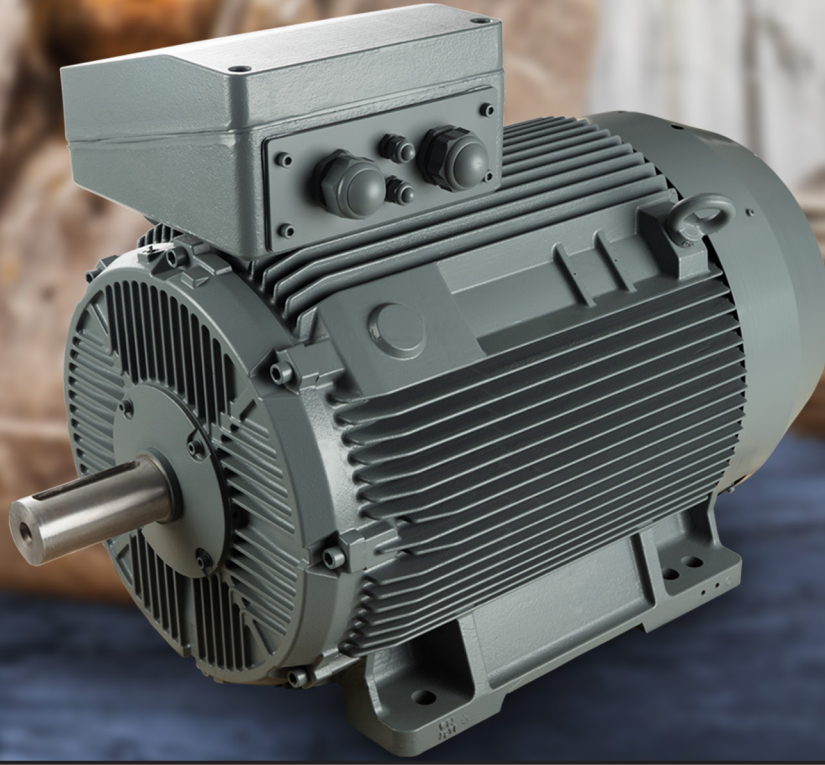
BUILT TO ENDURE, ENGINEERED FOR POWER

- Lower Temperature Rise on Winding & Bearing
- Ultra Low Vibration
- Optimized Aerodynamic Design & Effective Cooling
- Reinforced Long-Lasting Seal

- Customized Solutions
- Reinforced Housing Ensuring High Strength
- Two Additional Grounding Points on Housing

- UL Certification
- Default IP56
- Rotatable Cast Iron Terminal Box Up to 90°





Technical Specification

280-315 Frame Cast Iron Motors

Power Range	75 ... 200 kW [for higher powers please contact]
Number of Poles	2, 4, [6] ¹⁾
Efficiency Class	IE3 - IE4
Insulation Class	H insulation
Temperature Rise Limit	80K ΔT
Housing Material	Cast Iron
End-Shield / Flange	Cast Iron
Feet	Cast Iron [Integrated design for high durability]
Terminal Box	Rotatable Cast Iron up to 90°
Shaft Material	1.0511 [Stainless Steel, 4140 for roller bearing models] ¹⁾
Shaft Diameter	80 mm IEC Standart [85mm] ¹⁾
Bearings	Ball Bearing [Roller NU Bearing Optional], Co-Bearing
Service Factor	Default 1.15 [Up to 1.25 on request]

Varnish process	VPI varnish
Sealing	Radial shaft seal with spring
Cooling Method	IC 411 [Other] ¹⁾
Degree of Protection	Default IP56 [IP66] ¹⁾
Mechanical Protection	IK 08
Corrosion Protection	C3-M [C5-I] ¹⁾
Name Plate Material	Aluminium [Stainless Steel] ¹⁾
Fan / Fan	
Cover Material	Plastic / Steel [Galvanized]
Thermal Protection	PTC+PTO
Grease	Mobil polyrex
Monitoring	Optional [Thermal sensor for bearings and two vibration sensor for X-Y axis]
Other Options	Tropical Protection, Anti-Condensation Heater and Drain Holes, Special Vibration and Balance Class, Color, Bearing Insulation PT100 + PT1000
Specific Applications	IEC 6034-18-41 Standards IVIC-C ¹⁾

1) Upon Request

2) Please contact sales office for availability. Specifications are subject to change without notice. It is the responsibility of the product user to determine the suitability of this product for a specific application. All trade marks are the property of their respective owner.